

**71-75 S. WHITE HORSE PIKE, STRATFORD, NJ**

UP TO +/- 4,500 SQ. FT.  
AVAILABLE ON +/- 1 ACRE  
PAD SITE THAT INCLUDES EX  
-7-ELEVEN CONVENIENCE  
STORE AND EX- UNITED  
CHECK CASHING STORE

CONVENIENTLY LOCATED  
AT THE SIGNALIZED CORNER  
OF S. WHITE HORSE PIKE  
BETWEEN NEW ROAD AND  
ARLINGTON AVENUE

IDEAL LOCATION FOR A  
BANK, RESTAURANT, RETAIL,  
OFFICE OR MEDICAL USE

+/- 43 PARKING STALLS  
NOT INCLUDING SHARED  
CVS PARKING AND ADDED  
STALLS ON EX- GAS PUMPS

SHARED PARKING &  
ACCESS WITH CVS

PYLON SIGNAGE AVAILABLE

EXCELLENT ACCESS,  
VISIBILITY, PARKING,  
DEMOGRAPHICS, TRAFFIC  
COUNTS, ETC.

AVAILABLE IMMEDIATELY

PLEASE CALL OR EMAIL  
FOR MORE DETAILS

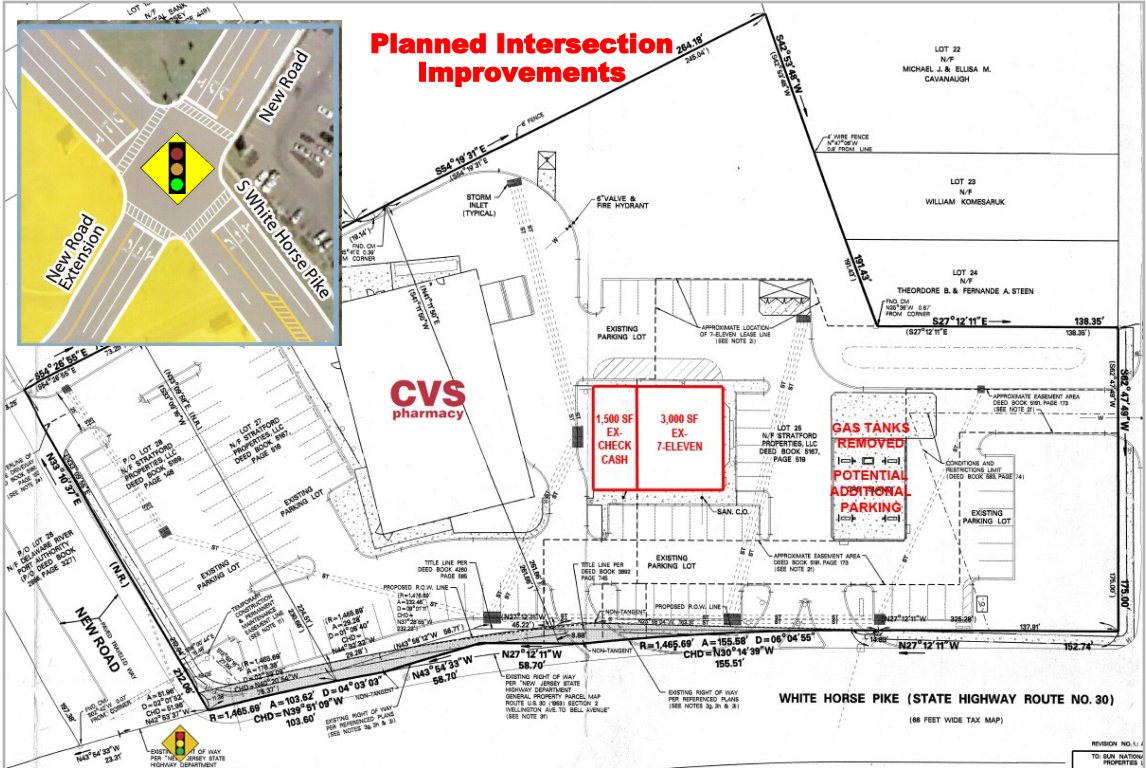
CONTACT INFORMATION:

RYAN W. TURNER

856-439 - 9200 (OFFICE)

856-261-6970 (CELL)

TURNER@IC-RE.COM

**INTERSTATE**  
COMMERCIAL

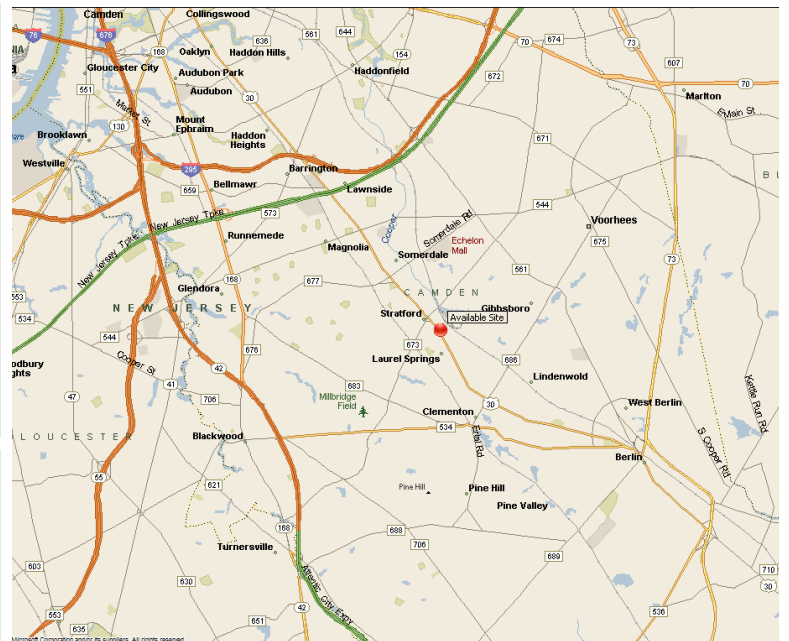


# FREESTANDING BUILDING FOR LEASE

71-75 S. WHITE HORSE PIKE, STRATFORD, NJ



DEMOGRAPHICS	1-MILE	3-MILES	5MILES
POPULATION:	11,864	90,825	215,059
DAYTIME POP.	17,030	88,462	206,100
AVG. HH INCOME:	\$75,971	\$79,065	\$90,058
MEDIAN HH INCOME:	\$57,928	\$59,125	\$68,224
TOTAL HOUSEHOLDS:	4,414	36,131	82,795
TRAFFIC COUNTS:	+/- 37,000 AADT		



**INTERSTATE**  
COMMERCIAL

14000 HORIZON WAY | SUITE 100 | MOUNT LAUREL | NEW JERSEY | 856-439-9200 (T) | 856-439-0404 (F)