

FORMER BANK BRANCH FOR LEASE

88 LACEY ROAD, WHITING, NJ, 08759

FORMER BANK ON +/- (1)
ONE ACRE OF LAND LO-
CATED ON LACEY RD. NEXT
TO THE SIGNALIZED INTER-
SECTION OF STATION RD.

AVAILABLE SPACE:
+/- 3,640 SF.

FORMER TD BANK BRANCH
WITH FOUR (4) DRIVE THRU
LANES

AREA RETAILERS INCLUDE:

- DOLLAR GENERAL
- WELLS FARGO
- RITE AID
- SANTANDER BANK

48 PARKING SPACES &
SHARED ACCESS,
PARKING EASEMENT
RESERVED

EXCELLENT
DEMOGRAPHICS, TRAFFIC
COUNTS, ETC.

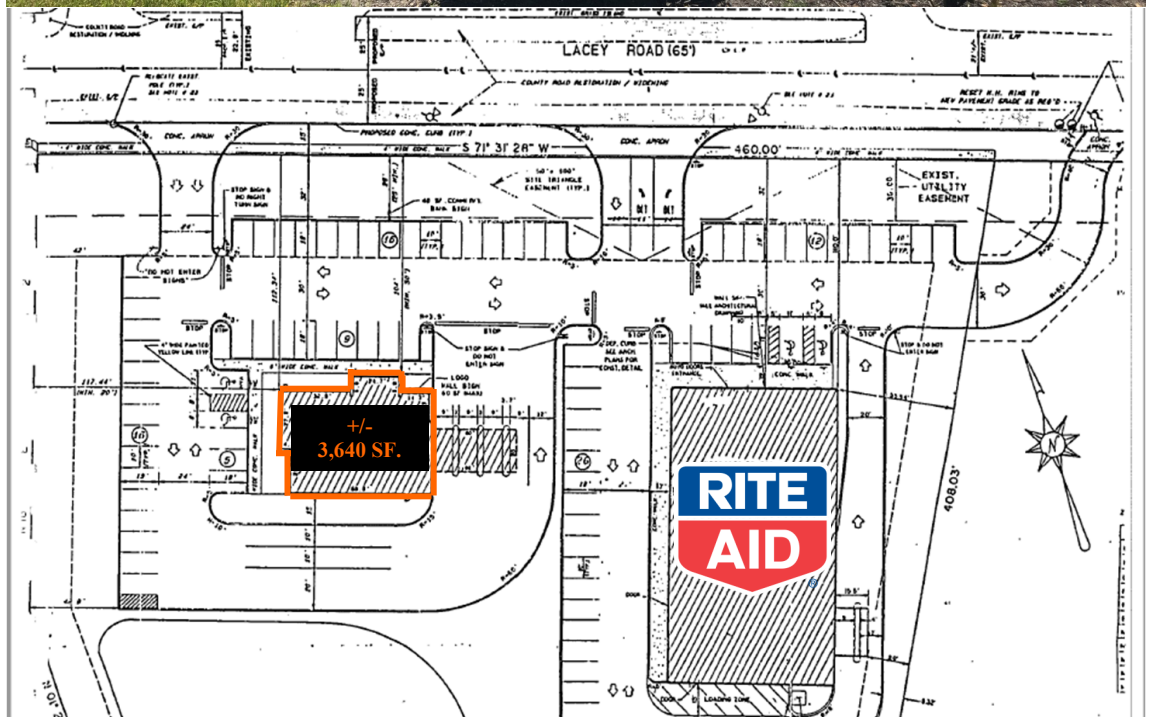
PLEASE CALL OR EMAIL
FOR MORE DETAILS

CONTACT INFORMATION:

RYAN W. TURNER

856-439-9200 (OFFICE)

TURNER@IC-RE.COM



INTERSTATE
COMMERCIAL

FORMER BANK BRANCH FOR LEASE

88 LACEY ROAD, WHITING, NJ, 08759



DEMOGRAPHICS	1-MILE	3-MILES	5MILES
POPULATION:	4,037	15,212	19,212
TOTAL EMPLOYEES:	1,524	3,657	4,352
TOTAL HOUSEHOLDS:	4,098	10,298	11,885
AVG. HH INCOME:	\$34,034	\$40,722	\$41,187
MEDIAN HH INCOME:	\$32,229	\$37,942	\$38,375
TRAFFIC COUNT:	+/- 12,547 AADT (LACEY RD.)		

INTERSTATE
COMMERCIAL

Floor Plan

