

# FORMER BANK ON CORNER LOT

627 Haddon Ave | Collingswood, NJ 08108 | Camden County

# FOR LEASE

± 7,225 SF ON ± 1.05 ACRES

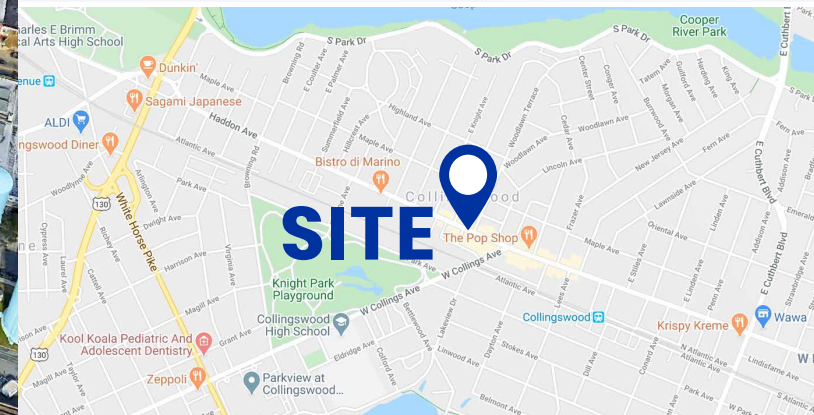


## PROPERTY FEATURES

- ± 7,225 SF Building on 1.05 Acre Corner Lot
- Great location in Collingswood Market featuring trendy shops and award winning restaurants
- Property has over 145 feet of frontage on Haddon Avenue & 315 feet of frontage on Woodlawn Ave

### DEMOGRAPHICS

	1 MILE	3 MILE	5 MILE
POPULATION	19,367	168,981	395,241
AVERAGE HHI	\$98,226	\$87,450	\$90,709
HOUSEHOLDS	8,639	62,063	153,299



FOR MORE INFORMATION:

**DANIEL P. SILVESTRI**

Phone: 856.439.9200

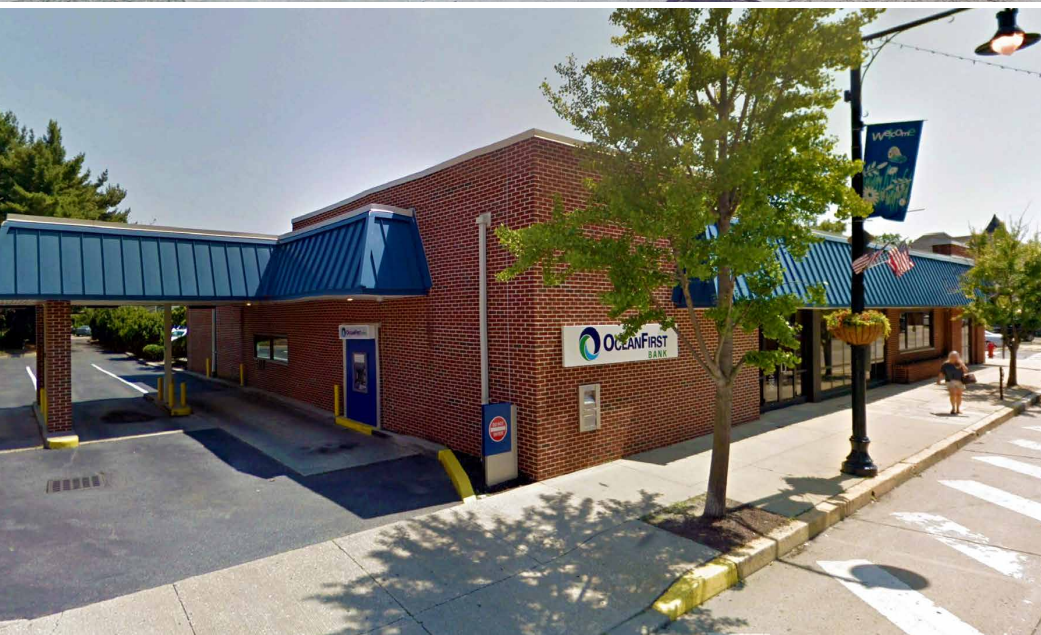
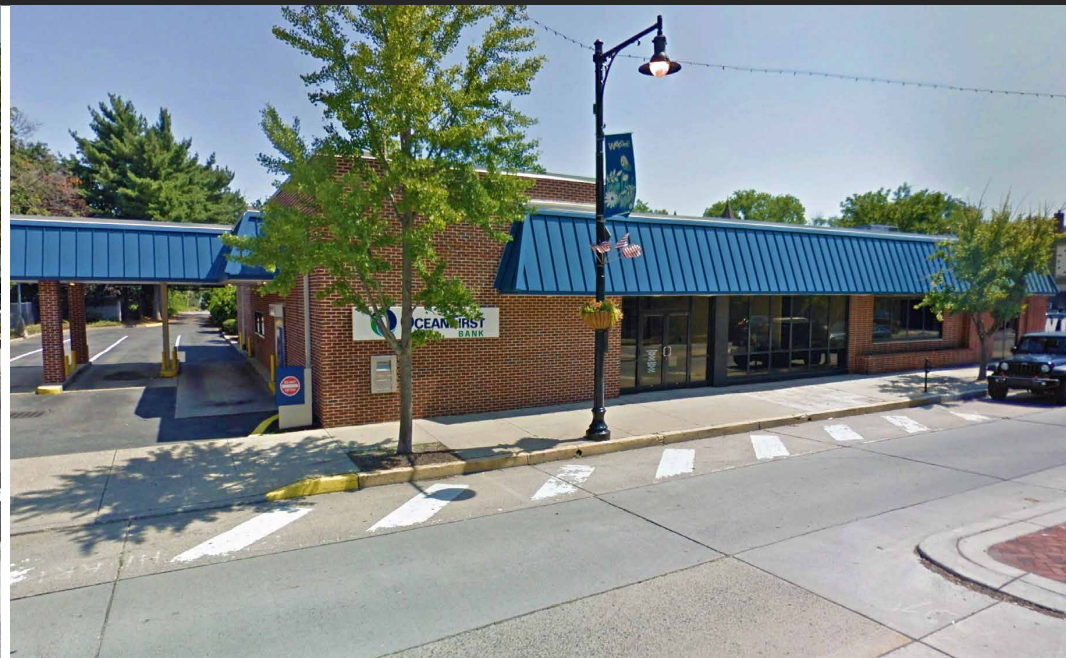
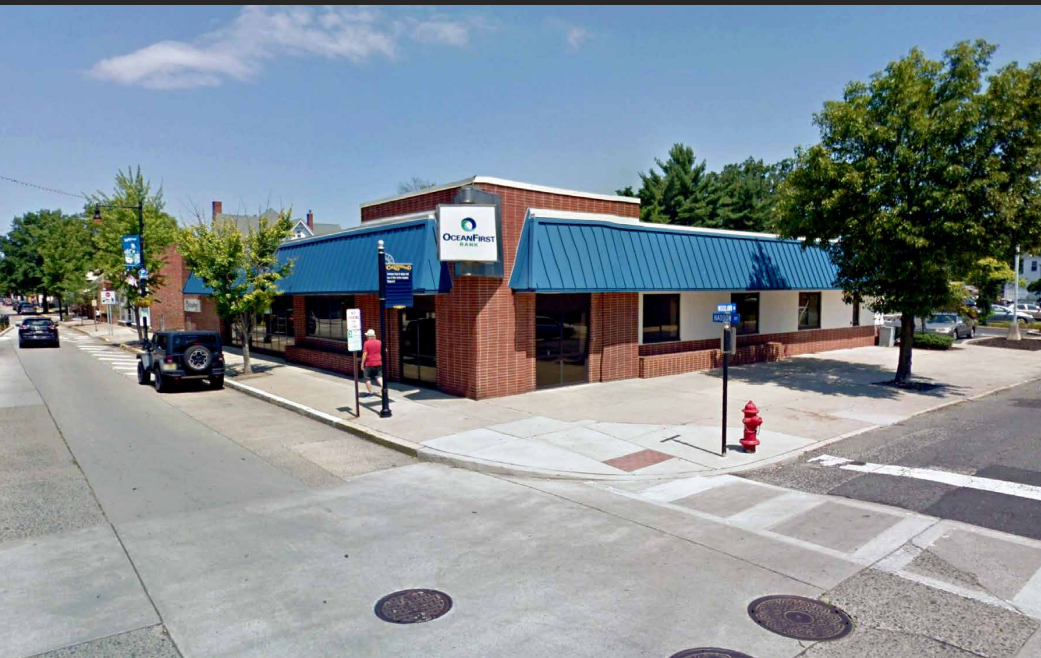
Email: [dsilvestri@ic-re.com](mailto:dsilvestri@ic-re.com)



Interstate Commercial  
1400 Horizon Way, Suite 100  
Mount Laurel, NJ 08054  
[www.icre.net](http://www.icre.net)



# COLLINGSWOOD PROPERTY PHOTOS: 627 HADDON AVE, COLLINGSWOOD, NJ 08108



**INTERSTATE**  
COMMERCIAL

Interstate Commercial  
14000 Horizon Way, Suite 100  
Mount Laurel, NJ 08054  
[www.icre.net](http://www.icre.net)

**DANIEL P. SILVESTRI**  
Phone: 856.439.9200  
Email: [dsilvestri@ic-re.com](mailto:dsilvestri@ic-re.com)



# COLLINGSWOOD RETAIL MARKET AERIAL: 627 HADDON AVE, COLLINGSWOOD, NJ 08108

